

Kerabit

Kerabit Sokkelilevy (Foundation Panel)

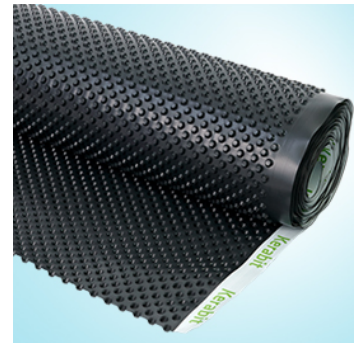
Päivitetty 6.3.2026 Tulostettu 11.4.2026

Kerabit Foundation Panel is a black, studded high-density polyethylene (HDPE) panel to protect the damp-proofing of foundations.

Foundation panels and edge trims must be covered as soon as possible after installation to prevent damage during construction.

Accessories for Kerabit Sokkelilevy:

- Kerabit Edge Trim
- Kerabit Nail with Plug for lightweight blocks
- Kerabit Nail with Plug for concrete



Technical data

Manufacturer / Manufactured for	Kerabit Oy, Lohja plant
Country of origin	Germany from spring 2024, Italy from spring 2022, Russia until February 2022
Conformity marking	CE
Waterproofing	Class W1
Production material	HDPE, recycled
Structural height	8 mm
Compression strength	200 kPa
Nominal weight	380 g/m ²
Rolls size	1 x 20 m or 2 x 20 m
Tensile strength	>328N/50 mm longitudinally, >2888N/50 mm laterally
Colours	black
Packages / pallet	24 rolls (1 x 20 m) or 12 rolls (2 x 20 m)
Weight / package	approx. 7.6 kg (1 x 20 m) or approx. 15.2 kg (2 x 20 m)
Weight / pallet	188 kg

Additional information

Elongation		>34,2 % longitudinally / >29,6 % laterally
Roll diameter		30 cm

Kerabit

Installation

Before installing the Kerabit Foundation Wall Membrane, it is necessary to install the Kerabit Pato/Radon Strip at the joint of the foundation wall and the footing. Kerabit foundation wall membranes are installed with the studs against the foundation wall, fastened at the top and finished with an edge trim.

Kerabit foundation wall membranes must be covered carefully and as soon as possible after installation to prevent damage during construction.

Storage

Rolls must be stored upright, protected against direct sunlight, at a temperature below 45 °C.

Checklist

- Kerabit Edge Trim for sealing the air gap
- Baros Nail with Plug for lightweight blocks
- Baros Nail with Plug for concrete
- Kerabit BIL 20/85 Bitumen Primer for pre-treatment
- Kerabit Pato/Radon Strip or Kerabit Self-Adhesive Membrane for the joint of the foundation wall and the footing