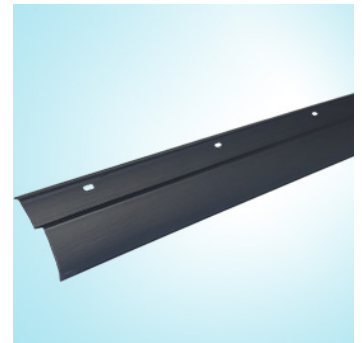


Kerabit

Kerabit Edge Trim

Päivitetty 26.9.2024 Tulostettu 2.4.2025

Kerabit Edge Trim is an edge trim intended for the upper edge of Kerabit Foundation Wall Membrane, used to close the air gap. The edge trim prevents debris and soil from entering between the basement wall and the foundation wall membrane. The trim is made of polyethylene and has pre-drilled holes for fastening.



Technical data

Manufacturer / Manufactured for	Kerabit Oy, Lohja plant
Country of origin	Germany
Production material	polyethylene
Dimensions	2 m x 70 mm
Colours	black
Weight / package	2,1 kg/bundle

Additional information

Product number 607040

Foundation wall membranes and edge trims must be covered as soon as possible to prevent damage during construction.